

**STATE OF LOUISIANA
SOWELA TECHNICAL COMMUNITY COLLEGE
ADDENDUM 2**

PURCHASING AGENT: Susan Tucek

EMAIL: susan.tucek@sowela.edu

BID NUMBER
80880

BID OPENING DATE/TIME: 01/29/24 10:00 AM	PRE-BID SITE VISIT 12/21/23 & 01/11/24 10:00 AM
VENDOR NAME	DELIVER BID BEFORE OPENING DATE/TIME TO: SOWELA TECHNICAL COMMUNITY COLLEGE SUSAN TUCEK 3820 SEN J B JOHNSTON AVENUE LAKE CHARLES, LA 70615
SIGNATURE:	INVOICE TO: ACCOUNTS PAYABLE SOWELA TECHNICAL COMMUNITY COLLEGE PO BOX 16950 LAKE CHARLES, LA 70616-6950
DATE:	

LINE NO	COMMODITY/SERVICE DESCRIPTION	QUANTITY ORDERED	UNIT	UNIT PRICE	EXTENDED AMOUNT
	ADDENDUM 2 IS ADD VERBAGE TO THE DESCRIPTION OF LINE 1, UPDATE THE DRAWINGS AND SPECIFICATIONS OF THE PROJECT, CANCEL LINE 2 OF BID AND CHANGE THE BID OPENING DATE/TIME TO JANUARY 31, 2024 AT 10 AM.				
1	LINE 1 VERBAGE: BUILDING REPAIRS AND REPLACEMENT OF DAMAGED INTERIOR FLOORING, CEILING AND WALL SECTIONS DURING CONSTRUCTION.				
2	<p>THIS ADDENDUM TO THE DRAWINGS AND SPECIFICAITONS FOR THIS PROJECT SUPERCEDEDS ALL CONTRARY AND CONFLICTING INFORMATION CONTAINED IN SAID DRAWINGS AND SPECIFICATIONS AND ARE HEREBY AMENDED IN THE FOLLOWING PARTICULARS AND ARE IN FULL FORCE OF THIS CONTRACT:</p> <p>SPECIFICATIONS SECTIONS 23 00 10 AND 23 0 20: CLARIFICATION THAT THE OPERATIONS AND MAINTENANCE MANUALS PROVIDED BY THE CONTRACTOR SHALL INCLUDE THREE BOUND HARD COPIES, ONE PDF ELECTRONIC COPY AND SHALL INCLUDE A COMPLETE SET OF THE APPROVED SHOP DRAWINGS IN ADDITION TO OPERATIN AND MAINTENANCE INFORMATION. PROVIDE A TABLE OF CONTENTS WITH TABS FOR EASE OF USE.</p> <p>SPECIFICATIONS SECTION 23 09 00: CLARIFICATION THAT THE CONTROLS SHALL BE PROVIDED, PROGRAMMED AND COMMISSIONED BY TRANE GULF SOUTH. CONTACT CLAY DEVLIN WITH TRANE FOR PRICING PRIOR TO BID AT 504-396-0483.</p>				
CONTINUED ON NEXT PAGE					

LINE NO	COMMODITY/SERVICE DESCRIPTION				
	<p>SHEET E2, 2A, KEYNOTE 3: QUANTITY AND TYPE OF LIGHTS SHOWN ON PLANS. DELETE REQUIREMENT TO VERIFY NUMBER OF LIGHTS PRIOR TO BID.</p> <p>SHEET E2, 2B, KEYNOTE 4: QUANTITY AND TYPE OF LIGHTS SHOWN ON PLANS. DELETE REQUIREMENT TO AND VERIFY NUMBER OF LIGHTS PRIOR TO BID.</p> <p>SHEETS MP0.1 AND MP0.2: EACH PHASING AREA SHALL BE FULLY CLEANED PRIOR TO MOVING TO THE NEXT PHASE OF CONSTRUCTION.</p> <p>SHEETS MP1.1A, 1.1B, 1.2A, 1.2B: NEW CONDENSATE DRAIN LINES SHALL BE INSTALLED PRIOR TO DEMOLITION OF EXISTING FAN CONDENSATE DRAIN LINES IN ORDER TO MAINTAIN COOLING, ESPECIALLY IN AREAS WHERE THE EXISTING FAN COIL UNITS ARE TO REMAIN.</p> <p>AT CONTRACTOR'S OPTION, NEW VALVES FOR PIPING 3 IN AND BELOW MAY BE BALL VALVES IN LIEU OF BUTTERFLY VALVES.</p> <p>SHEET M2.1B: REFER TO REVISED SHEET M2.1B-R THIS ADDENDUM FOR SUPPLY AIR ADDED TO IDF 118.</p> <p>SHEET M2.2B: REFER TO REVISED SHEET M2.1B-R THIS ADDENDUM FOR SUPPLY AIR ADDED TO MDF 209.</p> <p>SHEET M3.1: REFER TO REVISED SHEET M3.1R FOR I SUPPLY AND RETURN GRILLES.</p>				

GENERAL MECHANICAL NOTES:

- A. ROOMS ARE RESTRICTED TO GENERAL CONTRACTORS.
- B. ALL WORK SHALL COMPLY WITH LOCAL, STATE, AND FEDERAL CODES TO THE SATISFACTION OF CODE AUTHORITIES WITHOUT OBJECTION.
- C. ALL WORK WILL BE COORDINATED PRIOR TO COMMENCEMENT. DEMOLITION AND NEW CONSTRUCTION WORK TO BE PHASED BY QUADRANT ON EACH FLOOR. ALL OTHER QUADRANTS WILL HAVE TO REMAIN IN SERVICE TO ALLOW A FULLY FUNCTIONAL BUILDING.
- D. ALL NEW AND EXISTING FAN COIL UNITS AND ALL MECHANICAL EQUIPMENT WILL BE MAINTAINED PHYSICALLY APPLIED AND THIS WILL BE APPLIED TO THE CEILING GRID UNDER THE FAN COIL UNITS. TAG NUMBERS WILL BE MAINTAINED ON THE BSL.
- E. SYSTEMS WILL BE TESTED AND BALANCED AFTER EACH QUADRANT IS COMPLETE.
- F. CONTRACTOR SHALL PROTECT ALL EXISTING FLOORINGS AND FURNITURE DURING ALL DEMOLITION AND CONSTRUCTION ACTIVITIES. CONTRACTOR SHALL MAINTAIN THE SITE TO BECOME FAMILIAR WITH ALL EXISTING CONDITIONS PRIOR TO SUBMITTING A BID. COORDINATE ALL SITE VISITS WITH FACILITY SERVICES FOR AVAILABILITY AND ACCESS TO AREAS OF FACILITY INCLUDED IN SCOPE OF WORK. VERIFY ALL EXISTING PIPE SIZES AND DIMENSIONS OF ALL EXISTING EQUIPMENT PRIOR TO ANY WORK. NOTIFY ENGINEER PRIOR TO BID OF ANY CONFLICTS IN THE FIELD.
- G. COORDINATE ALL WORK WITH FACILITY SERVICES FOR AVAILABILITY AND ACCESS TO FACILITY. COORDINATE THE SHUT DOWN AND DEMOLITION OF ALL EQUIPMENT AND ANY UTILITIES DEMOLITION FOR THE INSTALLATION OF NEW EQUIPMENT WITH OWNER AND ALL RESPECTIVE TRADES DURING CONSTRUCTION.
- H. COORDINATE THE INSTALLATION LOCATION OF ALL NEW EQUIPMENT: PIPING, VALVES, ACCESSORIES, PIPING SUPPORTS, ETC. IN FIELD WITH EXISTING CONDITIONS, EXISTING STRUCTURAL BEAMS, COLUMNS, CONCRETE LIGHTING CEILING SLEEVINGS, ETC. ETC. AND WITH ALL TRADES OFFSET OR PRECISE PIPING, SUPPORTS, CONNECTIONS, ETC. AS REQUIRED FOR PROPER INSTALLATION AND OPERATION.
- I. COORDINATE ALL POWER REQUIREMENTS WITH DESIGNER'S CONTRACTOR PRIOR TO PLACING ORDER FOR NEW EQUIPMENT.
- J. VERIFY ADEQUATE SPACE AVAILABLE FOR MANUFACTURER'S RECOMMENDATIONS. COORDINATE CLEARANCE REQUIREMENTS OF NEW AND EXISTING MECHANICAL EQUIPMENT.
- K. CHILLED WATER AND HEATING HOT WATER PIPING SHALL BE COMPLETELY FLUSHED AND REFILLED. PROVIDE WATER TREATMENT FOR CHILLED WATER AND HEATING HOT WATER ONCE PIPING LOOPS HAVE BEEN REFILLED.
- L. TEST AND BALANCE - NEW FAN COIL UNIT CHILLED WATER AND HOT WATER SUPPLY, NEW FAN COIL UNIT SUPPLY, RETURN, AND OUTSIDE AIR LOOP CHILLED WATER AND HOT WATER SUPPLY AND AIR FLOW CHILLED WATER AND HOT WATER PIPING. EXISTING EXHAUST FANS AFTER DUCT MODIFICATIONS.
- M. ALL NEW LUMINAIR CONTROLLERS AND FAN COIL UNITS WILL BE CONNECTED TO THE TRAFFIC CONTROL FRONT END SYSTEM ON CAMPUS. NEW GRAPHICS AND PORTS LISTS WILL BE ADDED.
- N. THE CONTRACTOR SHALL BALANCE DESIGNATED OUTSIDE AIR UNIT CHILLED WATER AND HOT WATER COILS AFTER NEW CONTROLS, VALVES AND CONTROLS ARE INSTALLED. THE CONTRACTOR SHALL TEST OPERATION OF CHILLED WATER AND HOT WATER SYSTEMS, AND RETEN ROOMROOM AIR UNIT INTERLOCKS AFTER NEW CONTROLS ARE INSTALLED.

MECHANICAL KEY NOTES:

- 1. PROVIDE AND INSTALL NEW TRAFFIC FAN COIL UNITS, OWNER COIL UNIT TO SERVE EXISTING BUILDING AND TRAFFIC. PROVIDE NEW TRAFFIC SUPPLY, RETURN, AND OUTSIDE AIR DUCTWORK, PATION AND REPAIR INSULATION AS NECESSARY TO EXISTING DUCTWORK. PROVIDE SHIRT JACKET ON CHILLED WATER CONTROL VALVE. SHIRT JACKET ON HOT WATER CONTROL VALVE. WITH OUTDOOR AIR SERVICE PIPING AND CONTROL, SHIRT JACKET SHALL MATCH EXISTING INSTALLATION FIELD HEIGHT. COORDINATE WITH ELECTRICAL CONTRACTOR. THE CONTRACTOR SHALL BALANCE SUPPLY, RETURN AND OUTSIDE AIR CHILLED WATER AND HOT WATER COILS AFTER NEW UNITS AND CONTROLS ARE INSTALLED. PROVIDE NEW TRAFFIC CONDENSATE PUMP FOR EACH FAN COIL UNIT AND CONNECT TO NEW DRAIN HEADER PIPING. PROVIDE SENSORS, CONDENSATE DRAIN TRAP FOR EACH FAN COIL UNIT AS SHOWN. COORDINATE WITH TRAP LOCATIONS TO AVOID FAN COIL UNIT CONTROL PANELS AND SERVICE CLEARANCES.
- 2. FOR THE PREVIOUSLY REPLACED FAN COIL UNITS (FOL-17, 24, 25, 26, 27, 28, 29, 30, 31, 32, 33, 34, 35, 36, 37, 38, 39, 40, 41, 42, 43, 44, 45, 46, 47, 48, 49, 50, 51, 52, 53, 54, 55, 56, 57, 58, 59, 60, 61, 62, 63, 64, 65, 66, 67, 68, 69, 70, 71, 72, 73, 74, 75, 76, 77, 78, 79, 80, 81, 82, 83, 84, 85, 86, 87, 88, 89, 90, 91, 92, 93, 94, 95, 96, 97, 98, 99, 100). PROVIDE AND INSTALL NEW TRAFFIC SUPPLY, RETURN, AND OUTSIDE AIR DUCTWORK, PATION AND REPAIR INSULATION AS NECESSARY TO EXISTING DUCTWORK. PROVIDE SHIRT JACKET ON CHILLED WATER CONTROL VALVE. SHIRT JACKET ON HOT WATER CONTROL VALVE. WITH OUTDOOR AIR SERVICE PIPING AND CONTROL, SHIRT JACKET SHALL MATCH EXISTING INSTALLATION FIELD HEIGHT. COORDINATE WITH ELECTRICAL CONTRACTOR. THE CONTRACTOR SHALL BALANCE SUPPLY, RETURN AND OUTSIDE AIR CHILLED WATER AND HOT WATER COILS AFTER NEW UNITS AND CONTROLS ARE INSTALLED. PROVIDE NEW TRAFFIC CONDENSATE PUMP FOR EACH FAN COIL UNIT AND CONNECT TO NEW DRAIN HEADER PIPING. PROVIDE SENSORS, CONDENSATE DRAIN TRAP FOR EACH FAN COIL UNIT AS SHOWN. COORDINATE WITH TRAP LOCATIONS TO AVOID FAN COIL UNIT CONTROL PANELS AND SERVICE CLEARANCES.
- 3. PROVIDE NEW RETURN GRILLE WITH MANUAL BALANCING DAMPER AND CONNECT TO EXISTING RETURN DUCT.
- 4. REMOVE EXISTING EXHAUST FAN AND REPLACE BETWEEN FAN RUM NEW DUCT FROM EXHAUST FAN TO EXISTING GRILLES. PROVIDE NEW BALANCED COEFFICIENCY SENSOR TO CONTROL EXHAUST FAN.
- 5. PROVIDE NEW EXHAUST FAN DAMPER AND EXHAUST GRILLE FOR EXHAUST EQUIPMENT. FAN AND CONNECT TO EXISTING DUCT TO BSL.
- 6. PROVIDE EXHAUST INTERLOCKS BETWEEN EXISTING KITCHEN HOODS AND MAKEUP AIR UNIT ON ROOF.
- 7. PROVIDE NEW EXHAUST FAN AND CONNECT EXISTING GRILLES TO EXISTING FAN ON ROOF.
- 8. BALANCE EXISTING OFFICER OR GRILLE DESIGNATED "X" TO CFM DESIGN.
- 9. REMOVE EXISTING DUCT AND DEFLECTORS SHOWN HATCHED, CAP, SEAL, AND INSULATE EXISTING DUCT WHERE REMOVED.
- 10. REMOVE EXISTING TRAFFIC BRINEFAN, AND REPLACE BETWEEN TRAFFIC SUPPLY, RETURN, AND OUTSIDE AIR DUCTWORK. PROVIDE SHIRT JACKET ON CHILLED WATER CONTROL VALVE. SHIRT JACKET ON HOT WATER CONTROL VALVE. WITH OUTDOOR AIR SERVICE PIPING AND CONTROL, SHIRT JACKET SHALL MATCH EXISTING INSTALLATION FIELD HEIGHT. COORDINATE WITH ELECTRICAL CONTRACTOR. THE CONTRACTOR SHALL BALANCE SUPPLY, RETURN AND OUTSIDE AIR CHILLED WATER AND HOT WATER COILS AFTER NEW UNITS AND CONTROLS ARE INSTALLED. PROVIDE NEW TRAFFIC CONDENSATE PUMP FOR EACH FAN COIL UNIT AND CONNECT TO NEW DRAIN HEADER PIPING. PROVIDE SENSORS, CONDENSATE DRAIN TRAP FOR EACH FAN COIL UNIT AS SHOWN. COORDINATE WITH TRAP LOCATIONS TO AVOID FAN COIL UNIT CONTROL PANELS AND SERVICE CLEARANCES.
- 11. PROVIDE NEW RETURN GRILLE AND DUCT AND CONNECT TO EXISTING RETURN DUCT.
- 12. CONNECT EXISTING EXHAUST DUCT THROUGH 2ND FLOOR TO BSL JUNCTION.
- 13. PROVIDE NEW SUPPLY AND RETURN DUCT AND CONNECT TO EXISTING DUCTWORK AS SHOWN.

NOTES:
 CHANGES ARE QUANTITATIVE IN NATURE, AND BASED ON AVAILABLE RECORD SET INFORMATION FROM PREVIOUS PROJECTS. ALL CONSULT, MEASUREMENT, AND ELECTRICAL EQUIPMENT ARE NOT RESPONSIBLE. PROTECT CONTRACTOR SHALL BE RESPONSIBLE FOR EXISTING CONDITIONS. TO OBTAIN SATISFACTORY, PRIOR TO BEING ADOPTED BY OWNER OF ANY CONFLICTS AFFECTING THE WORK OF THIS PROJECT PRIOR TO BID.

ADG ENGINEERING
 Associated Design Group, Inc.
 1071 West Campbell Street, Suite 201
 Lafayette, Louisiana 70506
 Phone: (504) 244-0710
 Email: adg@adgeng.com

ADG Project No. 23081

**SOWELA TECHNICAL COMMUNITY COLLEGE
 CHARLESTON BUILDING
 REPLACEMENT OF HVAC UNITS**

3820 Semanor, J. Bennett Johnson Avenue
 Lake Charles, Louisiana 70615

Drawn By: 12/10/2011
 Design By: MA
 Checked By: MA
 No. Name: 23081 NC 18A - 01-03-24-01g

Revision	Date
1	1/22/14

Issued for: 1ST FLOOR SW - MECHANICAL PLAN
 Prepared by: M2.1B-R

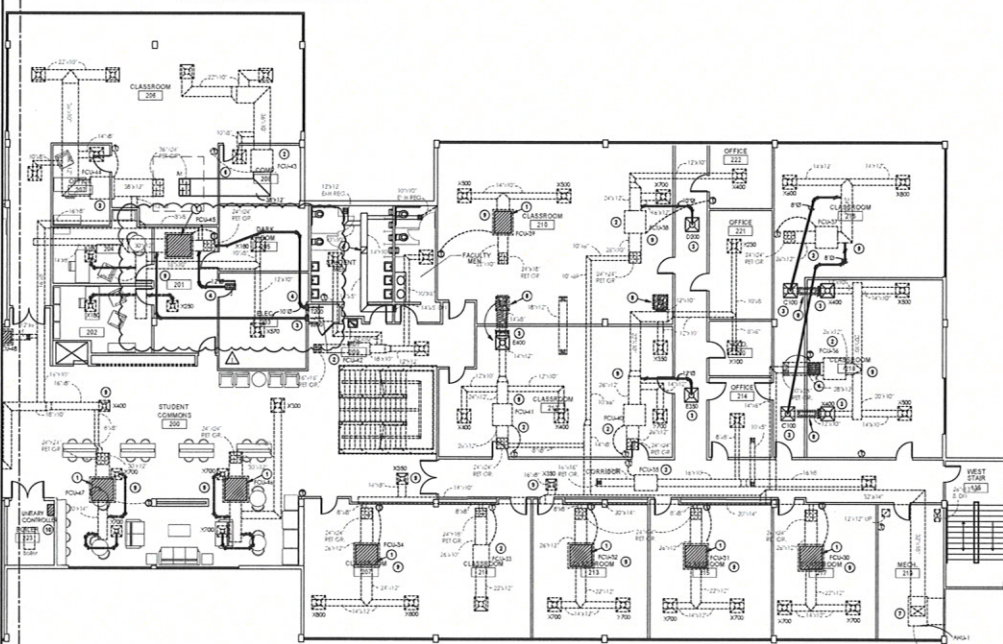
STATE OF LOUISIANA
 MECHANICAL ENGINEER
 M2.1B-R

GENERAL MECHANICAL NOTES:

- A. WORK IS RESTRICTED TO GENERAL CONTRACTOR.
- B. ALL WORK SHALL COMPLY WITH LOCAL, STATE AND FEDERAL CODES TO THE SATISFACTION OF CODE AUTHORITY HAVING JURISDICTION.
- C. ALL WORK WILL BE COORDINATED PRIOR TO COMMENCEMENT. DEMOLITION AND NEW CONSTRUCTION WORK TO BE PHASED BY QUADRANT ON EACH FLOOR. ALL OTHER QUADRANTS WILL BE KEPT TO REMAIN SERVICE TO ALLOW ALL FACILITY FUNCTIONS. BALANCE.
- D. ALL NEW AND EXISTING FAN COIL UNITS AND ALL MECHANICAL EQUIPMENT WILL BE HAVE PHYSICAL TAGS APPLIED AND THIS WILL BE APPLIED TO THE CEILING GRID UNDER THE FAN COIL UNITS. TAG NUMBERS WILL BE MATCHED ON THE BMS.
- E. SYSTEMS WILL BE TESTED AND BALANCED AFTER EACH QUADRANT IS COMPLETE.
- F. CONTRACTOR SHALL PROTECT ALL EXISTING FLOORING AND PIPING PRIOR TO ALL DEMOLITION AND CONSTRUCTION ACTIVITIES. CONTRACTOR SHALL HOLD THE SITE TO BECOME FAMILIAR WITH ALL EXISTING CONDITIONS PRIOR TO SUBMITTING A BID. COORDINATE ALL SITE VISITS WITH FACILITY SERVICES FOR AVAILABILITY AND ACCESS TO AREAS OF FACILITY INCLUDED IN SCOPE OF WORK. VERIFY ALL EXISTING PIPE SIZES AND DIMENSIONS OF ALL EXISTING EQUIPMENT PRIOR TO ANY WORK. NOTIFY ENGINEER PRIOR TO BID OF ANY CONFLICTS IN THE FIELD.

- G. COORDINATE ALL WORK WITH FACILITY SERVICES FOR AVAILABILITY AND ACCESS TO FACILITY. COORDINATE WITH OWNER AND DEMOLITION OF OLD EQUIPMENT AND ANY UTILITY DEMPTION FOR THE INSTALLATION OF NEW EQUIPMENT WITH OWNER AND ALL RESPECTIVE TRADES AFFECTED. FACILITY SHALL CONTINUE TO OPERATE DURING DEMOLITION AND CONSTRUCTION.
- H. COORDINATE WITH LOCATION OF ALL NEW EQUIPMENT, PIPING, VALVES, ACCESSORIES, PIPING SUPPORTS, ETC. IN FIELD WITH EXISTING CONDITIONS. VERIFY STRUCTURAL BEAMS, COLLARS, CONCRETE LIFTING COLLARS, ELEVATIONS, ETC. AND INSTALL TRAFFIC, OFFSET OR RIGGING PIPING, SUPPORTS, CONNECTORS, ETC. AS REQUIRED FOR PROPER INSTALLATION AND OPERATION.
- I. COORDINATE ALL POWER REQUIREMENTS WITH DIVISION 23 CONTRACTOR PRIOR PLACING ORDER FOR NEW EQUIPMENT.
- J. VERIFY ADEQUATE SPACE AVAILABLE FOR MANUFACTURER'S RECOMMENDATIONS. COORDINATE CLEARANCE REQUIREMENTS OF NEW AND EXISTING MECHANICAL EQUIPMENT.
- K. COLD WATER AND HEATING HOT WATER PIPING SHALL BE COMPLETELY FLOODED AND RE-PAIRED. PROVIDE WATER TREATMENT FOR CHILLED WATER AND HEATING HOT WATER ONCE PIPING LOOPS HAVE BEEN RE-PAIRED.

- L. TEST AND BALANCE - NEW FAN COIL UNIT CHILLED WATER AND HOT WATER SPIN NEW FAN COIL UNIT SUPPLY, RETURN, AND OUTSIDE AIR. CHECK CHILLED WATER AND HOT WATER SPIN AND AIR FLOW. CHILLED WATER AND HOT WATER PIPING, EXISTING EXHAUST PIPING, FAN DUCT ACCORDANCE.
- M. ALL NEW LIFTWAY CONTROLLERS AND FAN COIL UNITS WILL BE CONNECTED TO THE TRANE CENTRAL FRONT END SYSTEM ON CAMPUS. NEW GRAPHICS AND POINTS UNITS WILL BE ADDED.
- N. THE CONTRACTOR SHALL BALANCE DESCRIBED SUPPLIES AND UNIT CHILLED WATER AND HOT WATER COILS AFTER NEW CONTROL VALVES AND CONTROLS ARE INSTALLED. THE CONTRACTOR SHALL TEST OPERATION OF CHILLED WATER AND HOT WATER IN-TAKE, AND RETURN/ROOM/CLAMP AIR UNIT INTERLOCKS AFTER NEW CONTROLS ARE INSTALLED.



1 2ND FLOOR SW - MECHANICAL PLAN
Drawing Scale: 1/8" = 1'-0"

MECHANICAL KEY NOTES:

- 1. PROVIDE AND INSTALL NEW TRANE FAN COIL UNIT, FLOOR COIL UNIT TO MATCH EXISTING SCHEDULE AND TYPE. PROVIDE NEW TRANE UNITS WITH REMOTE CONTROL DISPLAY AND FAN SPEED CONTROLS FOR EACH FAN COIL UNIT. CONNECT TO EXISTING SUPPLY, RETURN, AND OUTSIDE AIR DUCTWORK. PATCH AND REPAIR INSULA HOLES AT CONNECTIONS TO EXISTING DUCTWORK. PROVIDE SPLIT BROADCAST I.C. CHILLED WATER CONTROL VALVE, SPLIT MODULATING I.C. HOT WATER CONTROL VALVE WITH OUTSIDE VALVES AND SERVICE VENT. MATCH EXISTING BE SENSOR, PIPING AND CONTROL BOX HAND BUILT MATCH EXISTING INSTALLATION FIELD VERIFY, COORDINATE DISCONNECT AND RECONNECT WITH ELECTRICAL CONTRACTOR. THE CONTRACTOR SHALL BALANCE NEW NETWORK AND OUTSIDE AIR AND CHILLED WATER AND HEATING COILS AFTER NEW UNITS AND CONTROLS ARE INSTALLED. PROVIDE NEW INSULATED CONDENSATE DRAIN PIPING AND TRAP. PROVIDE INSULATION, CONDENSATE DRAIN PIPING AND TRAP. PROVIDE INSULATION, CONDENSATE DRAIN PIPING AND TRAP FOR EACH FAN COIL UNIT AS SPECIFIED. COORDINATE NEW TRAP LOCATIONS TO AVOID FAN COIL UNIT CONTROL PANELS AND SERVICE CLEARANCES.
- 2. FOR THE PREVIOUSLY REPLACED FAN COIL UNITS (FCU# 17, 14, 15, 16, 18, 19, 20, 21, 22, 23, 24, 25, 26, 27, 28, 29, 30, 31, 32, 33, 34, 35, 36, 37, 38, 39, 40, 41, 42, 43, 44, 45, 46, 47, 48, 49, 50, 51, 52, 53, 54, 55, 56, 57, 58, 59, 60, 61, 62, 63, 64, 65, 66, 67, 68, 69, 70, 71, 72, 73, 74, 75, 76, 77, 78, 79, 80, 81, 82, 83, 84, 85, 86, 87, 88, 89, 90, 91, 92, 93, 94, 95, 96, 97, 98, 99, 100). PROVIDE AND INSTALL NEW INSULATED TRAPS, AND CONNECT THE CONDENSATE DRAIN TRAPS TO THE NEW CONDENSATE TRAPS. COORDINATE NEW TRAP LOCATIONS TO AVOID FAN COIL UNIT CONTROL PANELS AND SERVICE CLEARANCES. CORRECT PREVIOUSLY INSTALLED CONDENSATE PUMP DISCHARGE PIPING TO NEW OUTSIDE PIPING ON THE PLUMBING PLAN. EXISTING TRAP AND INSULATION IS TO REMAIN. RE-INSULATE OUTSIDE AIR. PROVIDE INSULATION, CONDENSATE DRAIN PIPING AND TRAP FOR EACH FAN COIL UNIT AS SPECIFIED. COORDINATE NEW TRAP LOCATIONS TO AVOID FAN COIL UNIT CONTROL PANELS AND SERVICE CLEARANCES.
- 3. PROVIDE NEW SUPPLY AIRWAYS. CONNECT NEW ROOF AND SUPPLY DUCT WITH SPIN COLLAR AND MANUAL BALANCING DAMPER TO EXISTING SUPPLY DUCT. BALANCE AS SHOWN.
- 4. PROVIDE NEW RETURN GRILLE. CONNECT NEW RETURN DUCT WITH MANUAL BALANCING DAMPER TO EXISTING RETURN DUCT.
- 5. PROVIDE NEW OUTDOOR AIR GRILLES IN CEILING AND CONNECT TO EXISTING BR-1 ON ROOF.
- 6. FOR FCU# 44 REMOVE EXISTING 1/2" OF RETURN DUCT AND REPLACE WITH ORIGINALLY SIZED 1/2" OF RETURN DUCT AND INSULATION TO EXISTING FLOOR DRAIN ON PLAN.
- 7. REINSULATE COILS CHILLED WATER, HOT WATER, AND AIR FLOW.
- 8. REMOVE EXISTING DUCT AND DEFENDERS SHOWN HATCHED. CAP, SEAL, AND INSULATE EXISTING DUCT WHERE REMOVED.
- 9. BALANCE EXISTING DEFENDER OR GRILLE DESIGNATED "X" TO OPEN ROOM.
- 10. PROVIDE NEW TRANE LIFTWAY CONTROLLER FOR EXISTING BUILDERS HOT WATER PUMP EXHAUST FROM ROOF AND MAKEUP AIR UNIT ON ROOF. (158-448 ELCT. SERVICE)

ADG ENGINEERING
 Associated Drain Group, Inc.
 1811 West Congress Street, Suite 201
 Lafayette, Louisiana 70504
 Phone: (225) 254-2715
 Email: adg@adgengr.com
 The design is the property of Associated Drain Group, Inc. and may be used only for the project and location specified. No other use or reproduction is permitted without the express written consent of Associated Drain Group, Inc.

ADG Project No.
23081

**SOWELA TECHNICAL COMMUNITY COLLEGE
 CHARLESTON BUILDING
 REPLACEMENT OF HVAC UNITS**

3820 Slaughter J. Bennett Johnsons Avenue
 Lake Charles, Louisiana 70615

DATE: 12/1/2023
 DRAWN BY: MA
 CHECKED BY: MA
 NO. ITEMS: 23081-M2.2B-R-01-23-24.dwg
 PROJECT: 23081
 DATE: 12/1/23
 ADDRESS: 3820 Slaughter J. Bennett Johnsons Avenue, Lake Charles, Louisiana 70615

DESIGNED BY: **J. BENNETT JOHNSON**
 2ND FLOOR SW - MECHANICAL PLAN
 Professional Seal

M2.2B-R

