

**30256 - CARROLLTON BASIN SEWER REHABILITATION NO. 15**

**Addendum Number 2**

**Date: 10/10/2023**

Your reference is directed to Contract Number: 30256 for Carrollton Basin Sewer Rehabilitation No. 15 which is due 11:00 a.m. CST on October 25, 2023.

The addendum provides for the following:

1. Revisions to Plans below.
  - a. Rehabilitation Plans Index Sheet S-3 & 8100 Nelson St. Rehabilitation Sheet S-19, **REMOVE AND REPLACE** with sheets S-3 & S-19 included herein.

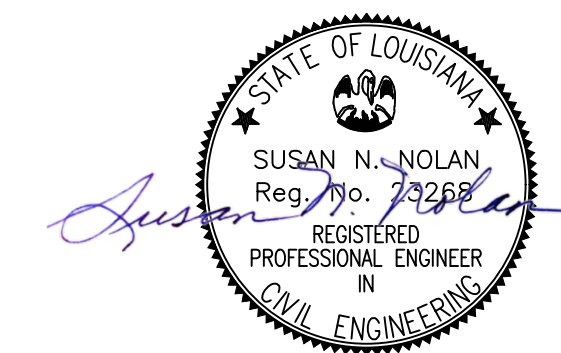
This addendum consists of one (1) page, with twenty (2) pages of attachments.

This addendum shall be part of the Contract Documents as provided in the instructions to Bidders. Items herein are issued to add to, modify, and clarify the Contract Documents. These items shall have full force and effect as the Contract Documents, and the cost involved shall be included in the bid prices. Acknowledge receipt of the addendum by inserting its number on the Bid Form of the Bid Documents. Failure to do so will subject the bidder to rejection.

**\*\*\* END OF ADDENDUM \*\*\***

REHABILITATION PLANS:

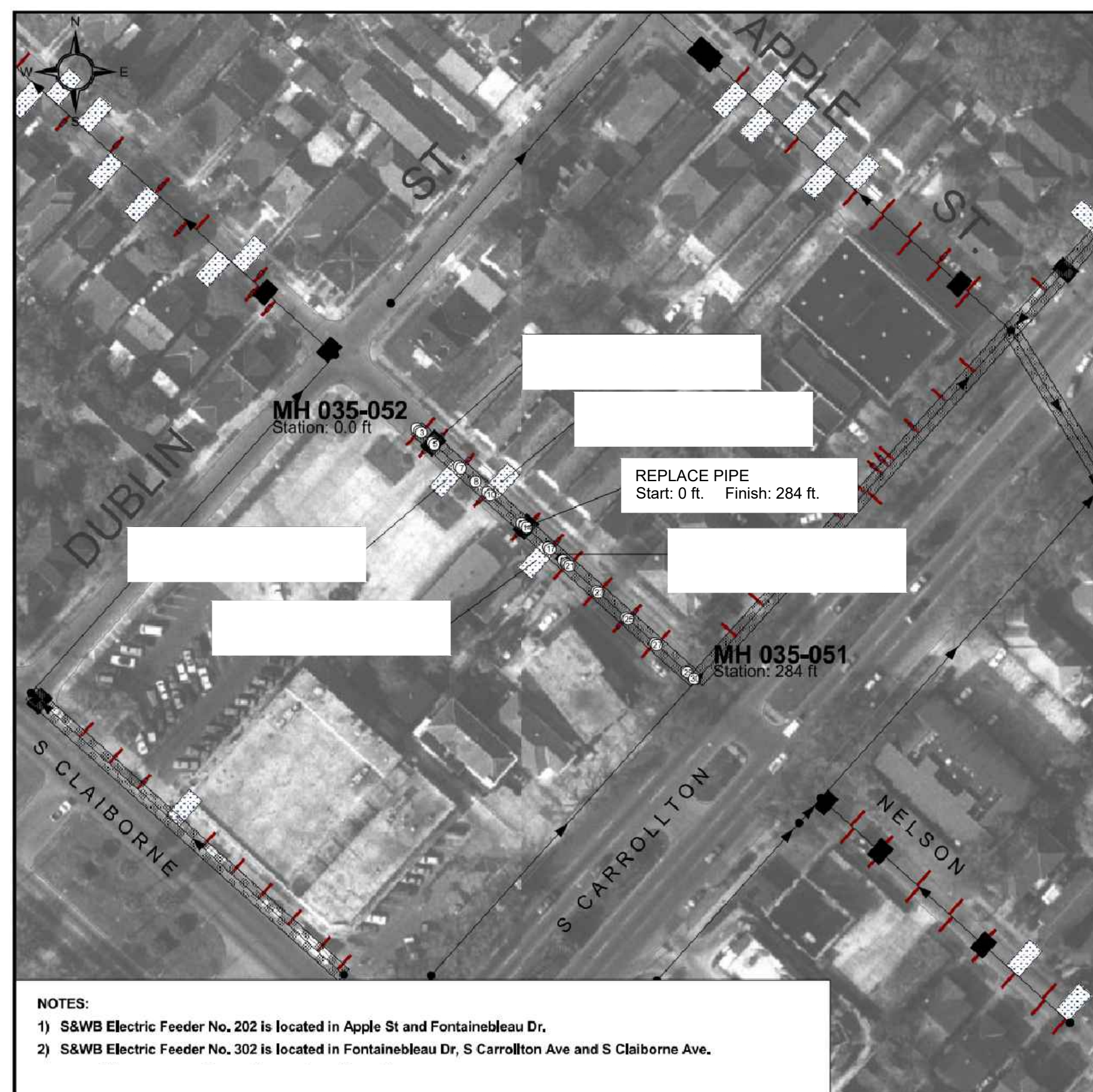
| #  | LINE SEGMENT                           | BLOCK NUMBER | BLOCK NAME   | SHEET NUMBER | JIRR CONTRACT NUMBER |
|----|--|--------------|--------------|--------------|----------------------|
| 1  | 025-033/035-026                        | 8500         | NELSON ST    | 15A          | RR099                |
| 2  | 026-035/026-034                        | 8500         | PRITCHARD PL | 15B          | RR099                |
| 3  | 026-038/026-037                        | 8500         | APRICOT      | 16A          | RR099                |
| 4  | 035-033/035-027                        | 8400         | NELSON ST    | 16B          | RR099                |
| 5  | 035-033/035-042                        | 2500         | CAMBRONNE    | 17A          | RR099                |
| 6  | 035-037/035-036                        | 2400         | DANTE        | 17B          | RR098                |
| 7  | 035-039/035-036                        | 8200         | NELSON       | 18A          | RR098                |
| 8  | 035-046/035-044                        | 2600         | DUBLIN       | 18B          | RR098                |
| 9  | 035-052/035-051                        | 8100         | NELSON       | 19A          | RR098                |
| 10 | THIS SPACE IS INTENTIONALLY LEFT BLANK |              |              |              |                      |
| 11 | 036-014/026-035                        | 8500         | PRITCHARD PL | 20A          | RR099                |
| 12 | 036-017/036-014                        | 2900         | JOLIET       | 20B          | RR099                |
| 13 | 036-018/036-014                        | 8400         | PRITCHARD PL | 21A          | RR099                |
| 14 | 036-023/036-018                        | 8300         | PRITCHARD PL | 21B          | RR099                |
| 15 | 036-024/036-023                        | 2800         | DANTE        | 22A          | RR098                |
| 16 | 036-027/036-023                        | 2900         | DANTE ST     | 22B          | RR098                |
| 17 | 036-034/036-033                        | 8100         | PRITCHARD PL | 23A          | RR098                |
| 18 | 036-038/036-020                        | 8300         | FIG          | 23B          | RR098                |
| 19 | 037-041/037-040                        | 3200         | DANTE        | 24A          | RR015                |
| 20 | 037-063/037-062                        | 3500         | DANTE        | 24B          | RR015                |
| 21 | 037-066/036-054                        | 3100         | CAMBRONNE    | 25A          | RR015                |
| 22 | 037-068/037-070                        | 8300         | OLEANDER     | 25B          | RR015                |
| 23 | 038-008/038-007                        | 8300         | PALMETTO     | 26A          | RR015                |



10/12/2023

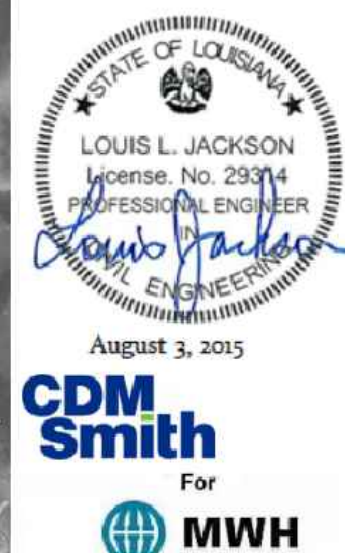
|  |                            |                   |    |
|--|----------------------------|-------------------|----|
| REV.   | DATE                       | DESCRIPTION       | BY |
|  |                            |                   |    |
| <b>SEWERAGE AND WATER BOARD<br/>OF NEW ORLEANS</b>                             |                            |                   |    |
| <b>CARROLLTON BASIN<br/>SEWER REHABILITATION NO. 15<br/>CONTRACT NO. 30256</b> |                            |                   |    |
| <b>SEWER REHABILITATION</b>  |                            |                   |    |
| DR. R.H.   | REHABILITATION PLANS INDEX |                   |    |
| TRC. R.H.  |                            |                   |    |
| CK. S.N.   |                            |                   |    |
| AP. S.N.N.   |                            |                   |    |
| SCALE: NTS   |                            |                   |    |
| DATE: 09/15/2023   | SET NO.                    | SHEET NO. 3 OF 30 |    |





**CCTV INSPECTION DETAILS FROM SURVEY ON 1/8/2023**  
 Street: NELSON Size: 8 in. Material: PVC  
 Max Depth: 5.00 ft. Dia. Depth: 6.00 ft. Length: 284 ft.

| DETAIL | STATION   | VIDEO CT. | CODE   | DESCRIPTION                  |
|--------|-----------|-----------|--------|------------------------------|
| 1      | 0.0 ft.   | 01741     | UMH    | MANHOLE                      |
| 2      | 3.0 ft.   | 01817     | CNA    | ABANDONED CONNECTION         |
| 3      | 5.0 ft.   | 01839     | CNA    | ABANDONED CONNECTION         |
| 4      | 16.0 ft.  | 02118     | CNO    | OFFSET CONNECTION            |
| 5      | 18.0 ft.  | 02142     | CNO    | OFFSET CONNECTION            |
| 6      | 43.0 ft.  | 02427     | CNO    | OFFSET CONNECTION            |
| 7      | 45.0 ft.  | 02514     | CN     | CONNECTION                   |
| 8      | 60.0 ft.  | 02659     | DEG.S1 | DEBRIS GREASE                |
| 9      | 72.0 ft.  | 02627     | CNM    | MATERIAL INSIDE CONNECTION   |
| 10     | 76.0 ft.  | 02650     | CNI    | CONNECTION WITH INFILTRATION |
| 11     | 107.0 ft. | 02915     | H      | HOLE IN THE PIPE             |
| 12     | 110.0 ft. | 02946     | FC     | CIRCUMFERENTIAL FRACTURE     |
| 13     | 110.0 ft. | 02931     | CNO    | OFFSET CONNECTION            |
| 14     | 112.0 ft. | 03001     | CNI    | CONNECTION WITH INFILTRATION |
| 15     | 134.0 ft. | 03108     | CNM    | MATERIAL INSIDE CONNECTION   |
| 16     | 134.0 ft. | 03108     | CNI    | CONNECTION WITH INFILTRATION |
| 17     | 136.0 ft. | 03145     | CNM    | MATERIAL INSIDE CONNECTION   |
| 18     | 149.0 ft. | 03229     | IGJ    | INFILTRATION GUSHER AT JOINT |
| 19     | 152.0 ft. | 03287     | CC     | CIRCUMFERENTIAL CRACK        |
| 20     | 153.0 ft. | 03305     | CNA    | ABANDONED CONNECTION         |
| 21     | 155.0 ft. | 03318     | CNA    | ABANDONED CONNECTION         |
| 22     | 183.0 ft. | 03420     | CNA    | ABANDONED CONNECTION         |
| 23     | 185.0 ft. | 03433     | CNA    | ABANDONED CONNECTION         |
| 24     | 215.0 ft. | 03556     | CNM    | MATERIAL INSIDE CONNECTION   |
| 25     | 215.0 ft. | 03637     | CNM    | MATERIAL INSIDE CONNECTION   |
| 26     | 242.0 ft. | 03754     | CNA    | ABANDONED CONNECTION         |
| 27     | 244.0 ft. | 03810     | CNA    | ABANDONED CONNECTION         |
| 28     | 274.0 ft. | 03917     | JEM    | DISPLACED JOINT MEDIUM       |
| 29     | 275.0 ft. | 03921     | DEG.F1 | DEBRIS GREASE                |
| 30     | 282.0 ft. | 04005     | DMH    | DOWNSTREAM MANHOLE           |

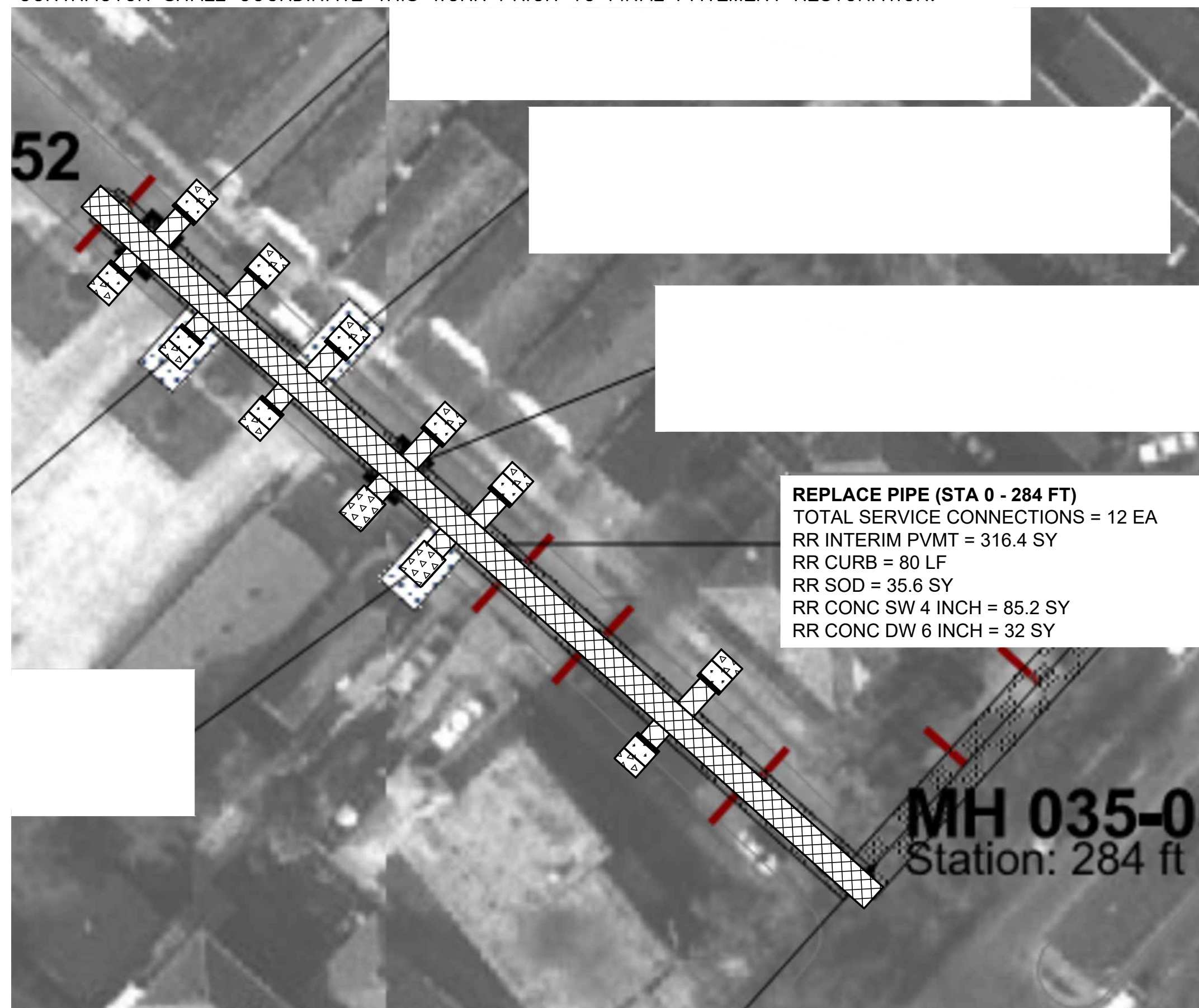


|                                    |  |
|------------------------------------|--|
| Rehabilitation Plan                |  |
| Pipe from MH 035-052 to MH 035-051 |  |
|                                    |  |
|                                    |  |
|                                    |  |
|                                    |  |

**NOTES:**  
 1) S&WB Electric Feeder No. 202 is located in Apple St and Fontainebleau Dr.  
 2) S&WB Electric Feeder No. 302 is located in Fontainebleau Dr, S Carrollton Ave and S Claiborne Ave.

SSERP SEWER REHABILITATION NELSON ST (8100) NTS

NOTE: PAVEMENT RESTORATION FOR THIS ROADWAY SHALL BE "INTERIM PAVEMENT" AS SCHEDULED IN THE SPECIFICATIONS. PERMANENT SITE RESTORATION, INCLUDING INTERSECTIONS, TRANSITIONS, AND ADA RAMP, WILL BE PERFORMED UNDER DPW CONTRACT RR098. SIDEWALKS, DRIVEWAYS AND SOD SHALL BE RESTORED IN ACCORDANCE TO DPW STANDARDS. OTHER WORK ON THIS BLOCK MAY BE PERFORMED UNDER DPW RR098. CONTRACTOR SHALL COORDINATE THIS WORK PRIOR TO FINAL PAVEMENT RESTORATION.



SSERP ROADWAY RESTORATION NELSON ST (8100) NTS

THIS SPACE INTENTIONALLY LEFT BLANK

**LEGEND**

- REMOVAL AND REPLACEMENT OF CONCRETE PAVEMENT, SIDEWALK, OR ADA RAMP SWBND (TRIANG)
- REMOVAL AND REPLACEMENT OF ASPHALT ROADWAY SWBND (ANSI 131)
- REMOVAL AND REPLACEMENT OF ASPHALT/CONCRETE COMPOSITE ROADWAY SWBND (ANSI 131/TRIANG)
- COLD MILL/COLD PLANING AND PLACEMENT OF ASPHALT SURFACE COURSE SWBND (ANSI 133)
- REMOVAL AND REPLACEMENT OF BRICK PAVEMENT, SIDEWALK, OR ADA RAMP SWBND (BRICK)
- REMOVAL AND REPLACEMENT OF SOD SURFACE COURSE SWBND (GRASS)
- REMOVAL AND REPLACEMENT OF GRAVEL SURFACE COURSE SWBND (GRAVEL)
- REMOVE EXISTING PAVEMENT AND PLACE INTERIM ASPHALT
- REMOVAL AND REPLACEMENT OF CURB (ALL TYPES)

NOTE: CONTRACTOR TO FIELD VERIFY THE LOCATION AND DIRECTION OF ALL SERVICE CONNECTIONS.

**ILSI ENGINEERING** INTEGRATED LOGISTICAL SUPPORT, INC.  
 4298 ELYSIAN FIELDS AVE, STE. B, NEW ORLEANS, LA 70122

|      |      |             |    |
|------|------|-------------|----|
| REV. | DATE | DESCRIPTION | BY |
|      |      |             |    |

**SEWERAGE AND WATER BOARD OF NEW ORLEANS**

CARROLLTON BASIN NO. 15  
 SEWER REHABILITATION CONTRACT NO. 30256

8100 NELSON ST

|                 |                                |
|-----------------|--------------------------------|
| DR. DK          |                                |
| TRC. DK         |                                |
| CK. RS          |                                |
| AP. RI          |                                |
| SCALE: AS NOTED | <b>DWG. No. 8986-S</b>         |
| DATE: 8-29-2023 | SET NO. SHEET NO. S-19 OF S-30 |