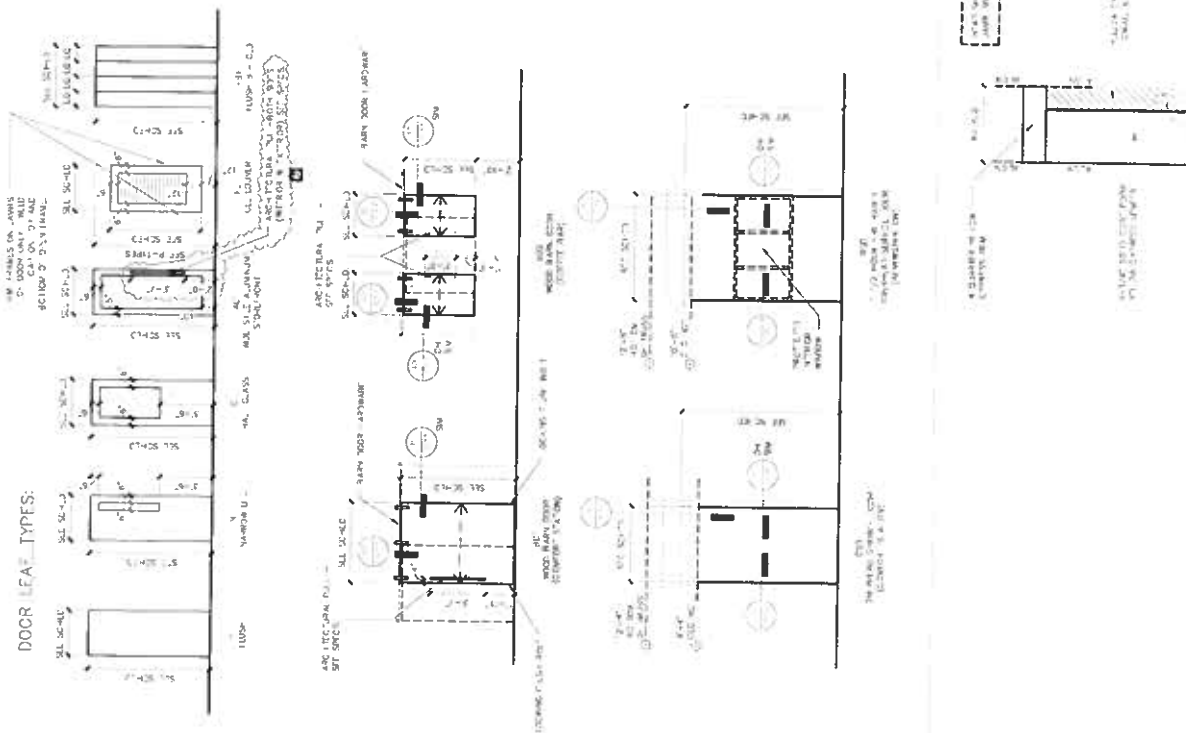
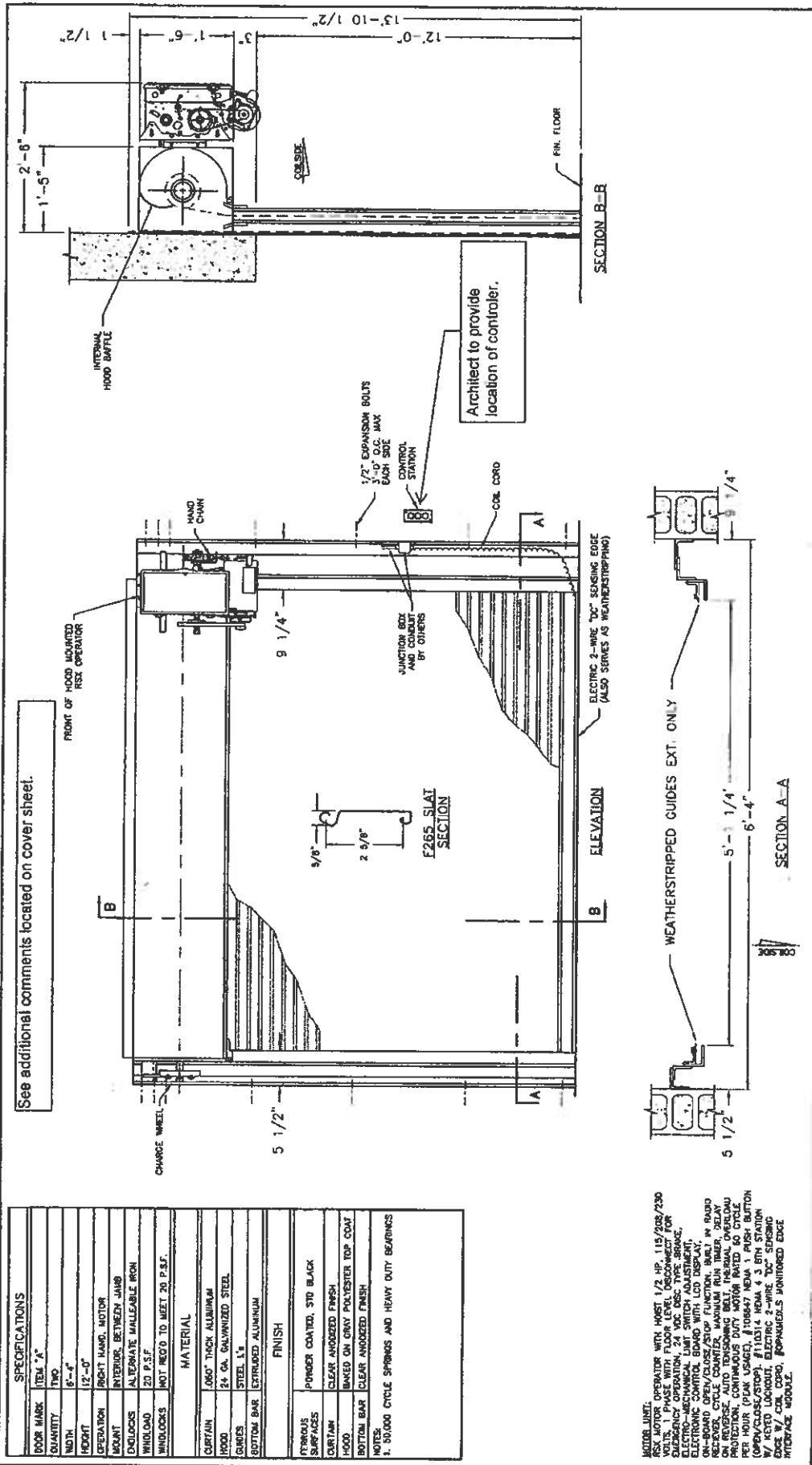


DOCR LEAF TYPES:

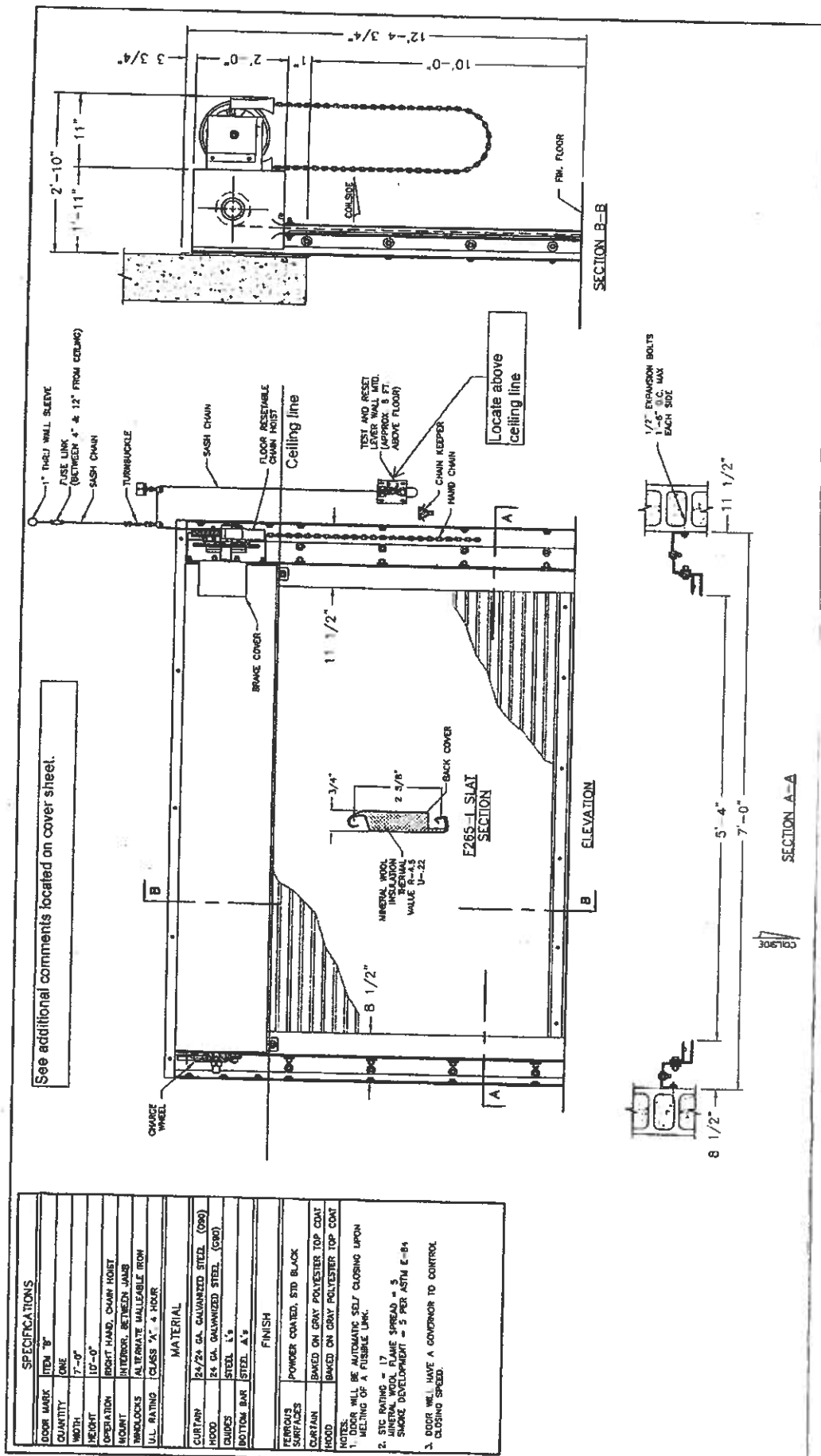
[illegible]

SPECIFICATIONS	
DOOR MARK	ITEM "A"
COUNTY	TWO
WIDTH	6'-6"
HEIGHT	12'-0"
OPERATION	RIGHT HAND, MOTOR
JOINT	INTERIOR, BETWEEN JAMB
DOORLOCKS	ALTERNATE WALLEABLE IRON
WINDLOAD	20 P.S.F.
WINDSPEED	MOT. MEQ. TO MEET 20 P.S.F.
MATERIAL	
CURTAIN	.060" THICK ALUMINUM
HOOD	24 GA. GALVANIZED STEEL
GLAZES	STEEL 1/2"
FINISH	
STRUCK SURFACES	POWDER COATED, STD. BLACK
CURTAIN	CLEAR ANODIZED FINISH
HOOD	BAKED ON GRAY POLYESTER TOP COAT
BOTTOM BAR	CLEAR ANODIZED FINISH
NOTES:	
1. 50,000 CYCLE SPRINGS AND HEAVY DUTY BEARINGS	

**See additional comments located on cover sheet.**



**MOTOR UNIT:** OPERATOR WITH MOST 1/2 HP, 115/208/230 VAC MOTOR WITH FLOOR LEVEL DISCONNECT FOR EMERGENCY OPERATION. ELECTRICAL CONTROL BOARD WITH LCD DISPLAY; ON-BOARD OPEN/CLOSE/SOFT FUNCTION, BUILT IN RADIO RECEIVER, CYLE COUNTER, MAXIMUM RUN TIME, DELAY ON REVERSE, AUTO THERMAL PROTECTION, OVERLOAD PROTECTION, CONTINUOUS DUTY MOTORS 60 CYCLE PER HOUR (PEAK USED), #106474 HEMA 4 MUSH BUTTON (FOR WALKSLOWLY), #110314 HEMA 4 3 PIN STATION INTERLOCK, #110314 HEMA 4 3 PIN STATION INTERLOCK, #110314 HEMA 4 3 PIN STATION INTERLOCK, #110314 HEMA 4 3 PIN STATION INTERLOCK.





# Attachment C: Drawings

## Dimensions Floor Plan

RFx #3000016991 Title: \*Site Visit\* Fire Door Removal & Replacement

KEY PLAN

LINE TYPE (FCFN)

- 1" SOLID LINE - 1" SOLID LINE
- 1" DASHED LINE - 1" DASHED LINE
- 1" DOTTED LINE - 1" DOTTED LINE
- 1" LONG DASH SHORT DASH LINE - 1" LONG DASH SHORT DASH LINE
- 1" SOLID LINE - 1" SOLID LINE
- 1" DASHED LINE - 1" DASHED LINE
- 1" DOTTED LINE - 1" DOTTED LINE
- 1" LONG DASH SHORT DASH LINE - 1" LONG DASH SHORT DASH LINE
- 1" SOLID LINE - 1" SOLID LINE
- 1" DASHED LINE - 1" DASHED LINE
- 1" DOTTED LINE - 1" DOTTED LINE
- 1" LONG DASH SHORT DASH LINE - 1" LONG DASH SHORT DASH LINE

KEY PLAN / INTERIOR AREA

FOR WALLS REQUIRING THE USE OF THE  
RETARDANT TREATED LUMBER AND FIRE  
RETARDANT TREATED WOOD SHAPING  
THIS AREA, SEE DETAIL 9/509

1 DIMENSIONAL CODE PLAN - IN (1,000) IN (1,000) IN (1,000)

